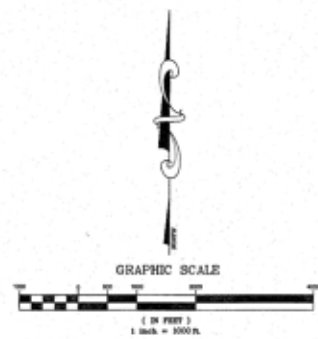
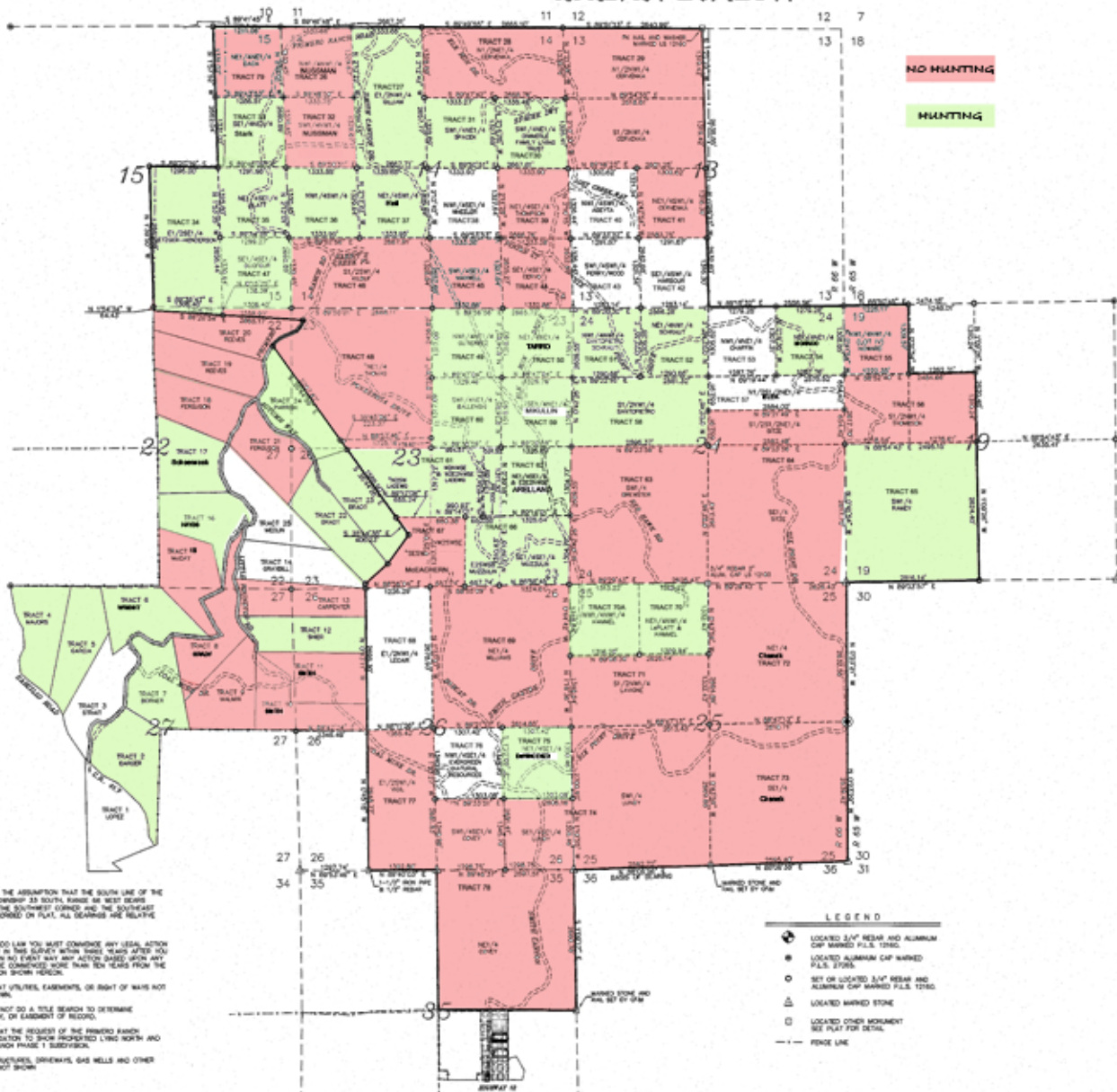


PRIMERO RANCH HUNTING PERMISSIONS MAP 2023/24 SEASON

LAND SURVEY PLAT PRIMERO RANCH

PART OF THE W1/2 OF SECTION 19, TOWNSHIP 33 SOUTH, RANGE 65 WEST,
AND PART OF THE SECTIONS 13, 14, 15, 22, 23, 24, 25, 26, & 35
TOWNSHIP 33 SOUTH, RANGE 66 WEST OF THE 6TH P.M.,
COUNTY OF LAS ANIMAS, STATE OF COLORADO.



DESCRIPTION AS DESCRIBED IN PROTECTIVE COVENANTS BOOK 308 PAGE 1

TOWNSHIP 33 SOUTH, RANGE 66 WEST OF THE 6TH P.M.
SECTION 10: SW1/4, SW1/4, NW1/4, NW1/4
SECTION 11: SW1/4, SW1/4, NW1/4, NW1/4
SECTION 12: SW1/4
SECTION 13: SW1/4, SW1/4, NW1/4, NW1/4
SECTION 14: SW1/4
SECTION 15: SW1/4
SECTION 16: SW1/4
SECTION 17: SW1/4, SW1/4, NW1/4, NW1/4
SECTION 18: SW1/4
SECTION 19: SW1/4
SECTION 20: SW1/4
SECTION 21: SW1/4, SW1/4, NW1/4, NW1/4
SECTION 22: SW1/4, SW1/4, NW1/4, NW1/4
SECTION 23: SW1/4, SW1/4, NW1/4, NW1/4
SECTION 24: SW1/4, SW1/4, NW1/4, NW1/4
SECTION 25: SW1/4, SW1/4, NW1/4, NW1/4
SECTION 26: SW1/4, SW1/4, NW1/4, NW1/4
SECTION 27: SW1/4, SW1/4, NW1/4, NW1/4
SECTION 28: SW1/4, SW1/4, NW1/4, NW1/4
SECTION 29: SW1/4, SW1/4, NW1/4, NW1/4
SECTION 30: SW1/4, SW1/4, NW1/4, NW1/4
SECTION 31: SW1/4, SW1/4, NW1/4, NW1/4
SECTION 32: SW1/4, SW1/4, NW1/4, NW1/4
SECTION 33: SW1/4, SW1/4, NW1/4, NW1/4
SECTION 34: SW1/4, SW1/4, NW1/4, NW1/4
SECTION 35: SW1/4, SW1/4, NW1/4, NW1/4
SECTION 36: SW1/4, SW1/4, NW1/4, NW1/4

TABLE OF SURVEY
BEARING THE BASIS ON THE ASSUMPTION THAT THE SOUTH LINE OF THE SW1/4 OF SECTION 26, TOWNSHIP 33 SOUTH, RANGE 66 WEST BEARS A BEARING OF 0° BETWEEN THE SOUTHWEST CORNER AND THE SOUTHWEST CORNER MONUMENTS DESCRIBED ON PLAT. ALL DEGREES ARE RELATIVE NORTH.

NOTES:
1) ACCORDING TO COLORADO LAW YOU MUST COMMENCE ANY LEGAL ACTION (SUCH AS SUIT AND CONVEY) IN THIS SURVEY WITHIN THREE YEARS AFTER YOU (OR YOUR SUCCESSORS) HAVE BEEN ADVISED IN WRITING BY THE SURVEYOR OF THE DATE OF THE CERTIFICATION SHOWN HEREON.
2) QUANTY REQUESTED THAT UTILITIES, EASEMENTS, OR RIGHT OF WAY NOT BE RECORDED AND SHOWN.
3) BERRY SURVEYING DID NOT DO A TITLE SEARCH TO DETERMINE OWNERSHIP, RIGHT OF WAY, OR EASEMENT OF RECORD.
4) THIS PLAT WAS DONE AT THE REQUEST OF THE PRIMERO RANCH PROPERTY OWNERS ASSOCIATION TO SHOW PROPOSED LIVING NORTH AND EAST OF THE PRIMERO RANCH PHASE 1 SUBDIVISION.
5) QUANTY REQUESTED STRUCTURES, SPRINKLERS, GAS WELLS AND OTHER SUBSURFACE FEATURES NOT SHOWN.

SURVEYOR'S CERTIFICATE
I, the undersigned, being a duly licensed and sworn-in land surveyor in the State of Colorado, do hereby certify that the survey represented by this plat was conducted in accordance with the laws and regulations of the State of Colorado and is correct to the best of my knowledge and belief.

DARYL L. TERRY
P.L.S. 7292

TERRY SURVEYING INC.
215 2ND ST. DENVER, COLORADO 80202

PRIMERO RANCH

DATE OF SURVEY: n/a DATE: 06/05/2020

CHECKED BY: G. TERRY DRAWING NO.: 2430-20

PLAT NO.: 7332-20 SHEET: 1 OF 1